



## PAVER CATALOG



### Driveways

Invest in a new driveway with confidence by having a paver driveway installed. Our driveways are stronger than any other solid surface driveway.

### Walkways

Paver walkways are a great way to add a pop of color and to enhance the overall curb appeal of your home or business.

### Patios

At Precision we want to help you add a new room to your home by creating your own unique outdoor oasis featuring a new Precision patio.

# A LOOK INSIDE



## Page Reference Guide

Pg. 3	Driveways & Parking lots
Pg. 4	Walkways & Paths
Pg. 5-7	Patios
Pg. 8	Circle Patios
Pg. 9-10	Slabs, Slate, & Stone
Pg. 11	Custom Designs & Paver Inlays
Pg. 12	Permeable Pavers

## Why Pick Pavers: The Facts

- Concrete slabs are often lower initially in cost per square foot than pavers, however there is more to consider than the upfront cost:
  - Concrete has minimums & you may have to pay for more than you need.
  - If you go with stamped concrete, pavers will be similar in up-front cost.
  - The long-term costs for repairs and/or replacements will often outweigh the initial savings.
  - Concrete often stains and cracks as it ages becoming an eye-sore. If the cracks worsen, you will likely need to replace the entire slab, or have a section cut out and re-poured leaving a noticeable patch.
- Pavers are rated to be 4x as strong as a typical concrete slab, which means they can handle 4x as much weight on their surface before they crack. Due to the installation process and their interlocking system, paving stones are extremely flexible allowing them to disperse the pressure or weight evenly, which prevents cracking.
- If any settling should occur, the stones can be lifted, the base can be re-compacted & then the pavers can be set back into place looking brand new.
- Concrete slabs can often be very slippery when wet. Pavers are made to add traction & prevent slippage making them ideal for driveways & pool decks.

*Precision Patios are designed to last a lifetime. We have proven this with patios that are more than 35 years old and look as good as new.*

BETWEEN OUR FOREMEN & OUR OTHER TEAM MEMBERS PRECISION HAS THE EXPERIENCE, KNOWLEDGE, AND DEDICATION TO BRING YOUR DREAMS TO LIFE. BY CHOOSING PRECISION YOUR ONLY LIMITATION IS YOUR IMAGINATION. CALL US TODAY FOR YOUR FREE CONSULTATION.

Connect with us to see more projects!





*We don't just come up with unique ideas, we bring them to life.*



## Paver Driveways

*Size is not a limiting factor for Precision's team.*

Investing in a new driveway or parking lot is not a small investment for residential or commercial projects. Protect your investment by going with a paver surface so if your ground does settle, you only have to fix the small portion instead of having to tear up all the concrete. After all, concrete is only guaranteed to do two things, get hard and crack. Make the right decision and choose a Precision paved surface.

### A. Commercial Parking lots

Going with a Precision paved lot will allow you to cut down on your lot maintenance expense and also add curb appeal to your business, bringing more customers through the door. Precision can also add a permeable base that extends below the frost line that is both eco-friendly, helps lots melt off faster, and reduces icy build up in the winter making your lot clear of snow quicker and safer overall.



B



B



B



B

### B. Residential Driveways

With all of the same great benefits as listed above for commercial lots, residential driveways by Precision mean that you will never have to worry about getting a whole new driveway again. With limitless design possibilities, this once in a lifetime purchase can be completely customized to meet the needs of you and your property.





LANDSCAPING & CONSTRUCTION, INC.

*The Professionals Since 1981*

## Walkways

From design to install, Precision does it all. Why go with a solid concrete surface only to have to tear it up and replace when it starts to crack and crumble?

Spruce up your property with a Precision paver walkway to have a beautiful custom piece that will last for decades to come.



### A. Connecting your spaces

A paver walkway is a great way to improve the flow between your outdoor living spaces.

### B. Around the house

Eliminate the hassle of walking in wet grass in the summer and having to deal with winterkill in your lawn from shoveling a path around your home all winter with a new paver walkway.

### C. Work with what you got

A paver walkway is a great way to expand upon existing surfaces & walks to bring more functionality to your property.

### D. Front Entrance

Make your front sidewalk an extension of your home by adding curb appeal and functionality with a new Precision paver walkway.





# Precision Patios

*Don't let your home end at the back door. Allow us to create a unique outdoor living space for all your entertaining needs.*



## A. Elevation Issues

At this home we combined design and functionality to account for the difference in elevation between the patio door and where the deck steps land in the yard.

## B. Be unique

Instead of laying these large format pavers parallel to the home we installed them on a 45 degree angle with border to tie it all together.

## C. Walk-out Wonder

Who wouldn't want to walk out their back door to this paver paradise?

## D. Define your spaces

Maximize your outdoor living space by defining different areas while keeping them connected.

## E. Enjoy the sound of water

Water features can be a tranquil way to just sit, relax, & enjoy your new outdoor room.

## F. Don't let it end with a deck

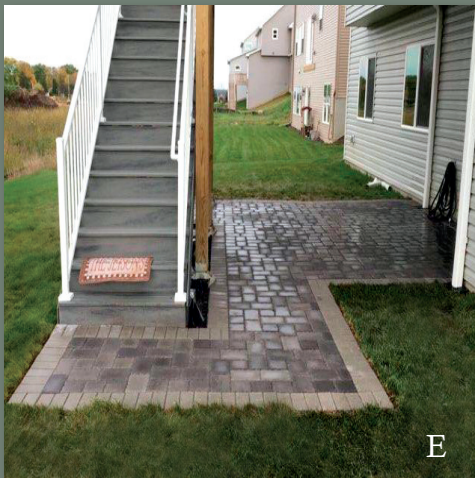
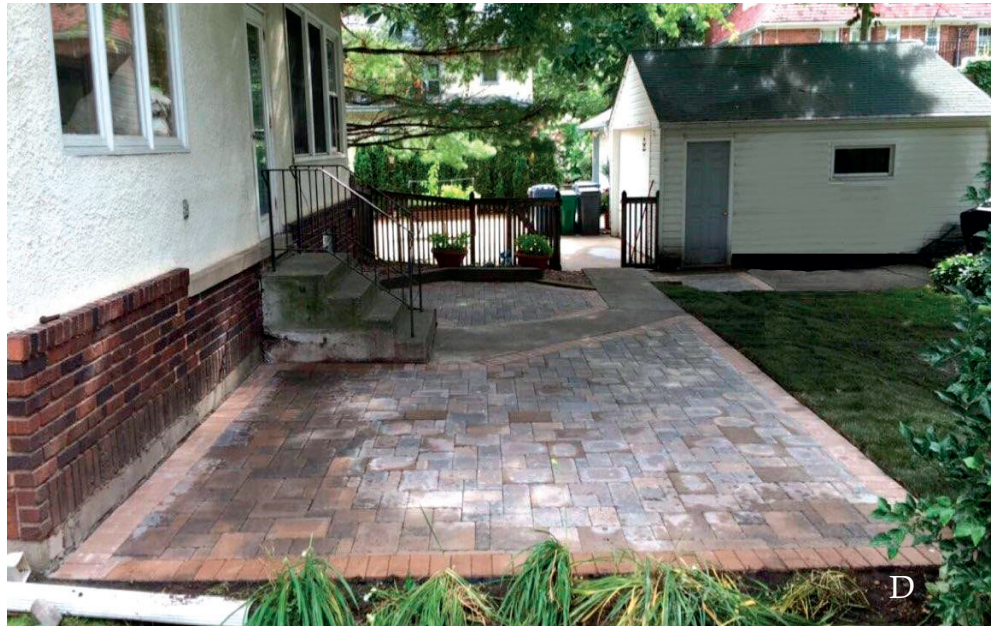
This unique outdoor space originally consisted of just a deck, but with some grade changes Precision put together a truly unique addition to this home.

*Don't Worry, Leave it to the Professionals.*





*Here is a look at a few more  
of our patio designs.*



#### A. Getting creative

Instead of filling in this swimming pool and tearing off the pool deck, we transformed this space into a sunken one-of-a-kind back yard retreat.

#### B. Space is not an issue

Don't let a lack of space limit your imagination. In this area the houses are not very far apart, but we were still able to put together this back-yard oasis.

#### C. State fair function

This project connected spaces while providing style to a once muddy area.

#### D. Old + New = Unique

This small yard left the owners wondering how they could gain usable space. We helped them connect all areas of their yard without breaking the bank.

#### E. The path more traveled

These homeowners had a simple patio below their deck in mind but still wanted to be able to get to their steps without walking through the wet grass. With a few additional square feet of pavers, we were able to give them exactly what they were looking for.



# Precision Patios & Paving Patterns

## A. Cobblestone Basket weave

This pattern consists of an intertwined web of 6" x 6" and 6" x 9" pavers.



## B. Random Pattern

This pattern consists of an intertwined web of as many or as few of the following size pavers as you choose. Common sizes include the 3" x 6", 6" x 6", 6" x 9", and 9" x 12" pavers.

## C. Running bond

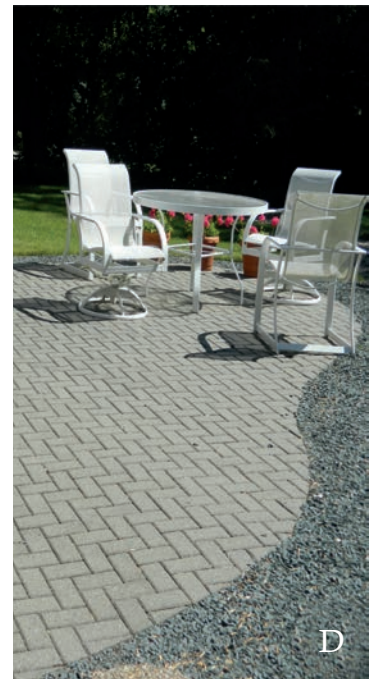
This pattern can be done with any paver of your choosing.

## D. Herringbone

This pattern is put together using the Holland or any rectangular paver and can be run square or at a 45-degree angle.

## E. Holland Basket weave

This pattern is put together using the Holland or any rectangular paver.





# Paver Circle Patios

*Perfect patio on its own or as part of a larger design*

The circle represents the notions of totality, wholeness, original perfection, self, infinity, eternity, and timelessness... all of which we want to bring to your retreat.

## A. Stand alone patio

A circle patio can be a great addition to any back yard or garden to give you, your family, and your friends a solid place to pull up a table and chairs and enjoy the outdoors. A circle patio can also be the perfect place to have a fire pit. They provide a safe and level surface to enjoy your time around the fire.

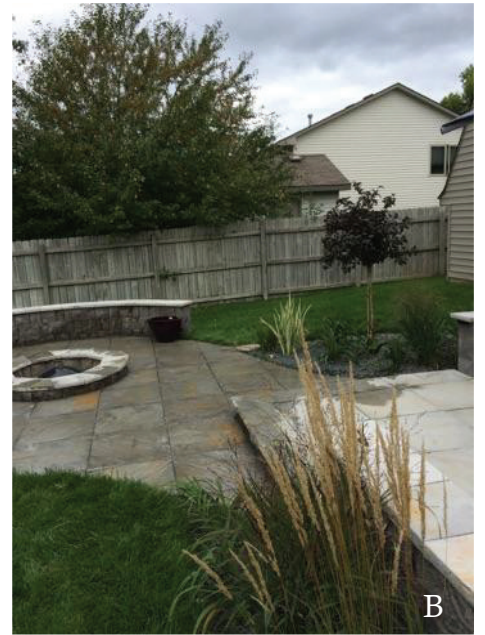


## B. Part of the grand design

A circle patio can also be a great design element to add into or alongside any patio, driveway, or even an existing concrete surface to give the surface an extra intrigue and character.









## Slabs, Slate & Stone Continued



B



A



C



B



C



A

### A. Natural Stone

Natural stone comes in many shapes and sizes and can be used with or without paver locking sand to create unique patios & walks.

### B. Wet Cast Slate

This cast stone product is engineered to provide a lasting option to traditional slate stone, which flakes.

### C. Slabs (Large format Pavers)

Larger format pavers are becoming increasingly popular. Although they are more expensive than normal pavers, they are often less expensive than wet cast products that have similar appearance and texture.



A



# Custom Designs & Inlays

## A. Paver Designs

Precision has the experience & skill to bring all your design ideas to life.

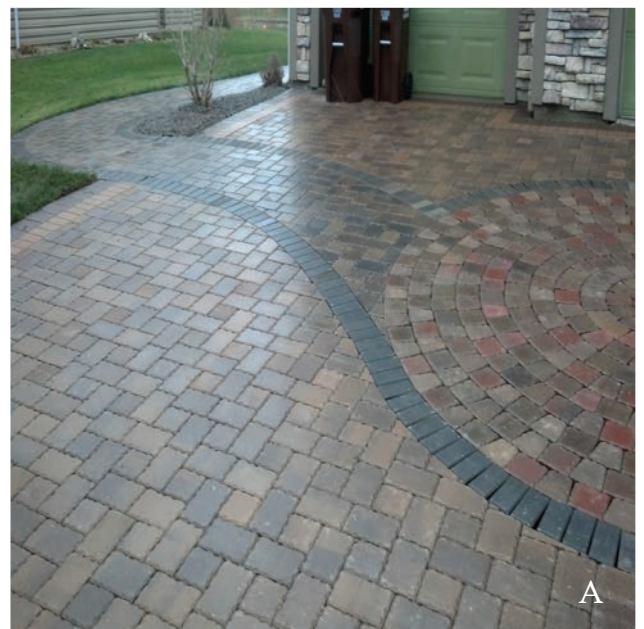
## B. Address Inlay

Make your driveway unique with a custom inlaid address.

## C. Paver Ribboning

Ribboning can be a great way to mix concrete slabs and pavers. This can both break up the surface to reduce the chance of cracking & bring in the added traction & design pavers provide.

 **PRECISION**  
LANDSCAPING & CONSTRUCTION, INC.  
*The Professionals Since 1981*



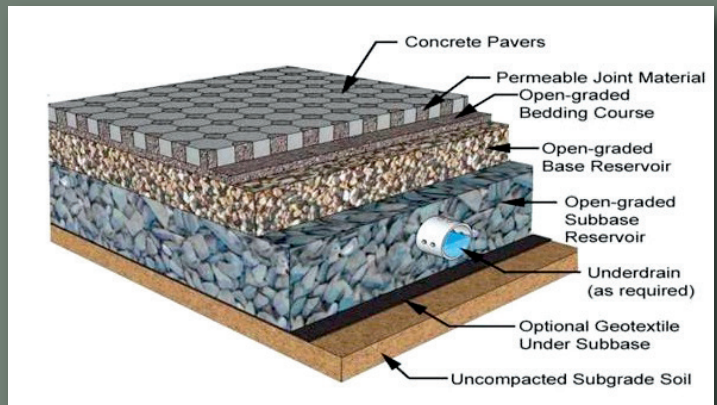


# Permeable Pavers

Permeable pavers are different from traditional pavers in that they allow rainfall to percolate to an underlying reservoir where rainfall is either infiltrated to the soil or removed by a subsurface drain. Soil itself acts as a natural filter and as more of the world gets covered by asphalt and concrete we are removing that important natural filtration step and sending contaminated water runoff straight back into our lakes and streams. By choosing permeable pavers you will be helping in restoring the earth's natural processes.

## So Why Permeable?

- Reduce water runoff.
- Restore natural filtration process.
- Eliminate pooling of precipitation.
- Reduces the amount of ice build up.



Depiction from *concretecivil.com*

